



November 12, 2024

Spence Engineering Consulting & Municipal Engineers
86 E. Allendale Avenue
Saddle River, NJ 07458
Pomona, NY 10970

Re: Weinberger Subdivision – 216 Grandview Avenue
Village of Montebello
Tax Lot 41.13-2-5, 841.17-1-5, 41.17-1-6 & 41.13-2-6

Att: Martin K. Spence, PE, Village Engineer

Dear Martin,

Civil Tec Engineering proposes to perform (3) three test pits 12 feet deep or until groundwater is evident in the location of the three building foundations in question, Lots 21, 22 & 24 of the Weinberger Subdivision Plans. See the attached Test Pit location Plan.

We will provide Soil Logs for the test pits and locate the groundwater elevation for the design of the addition of basements and the foundation drains.

Please contact me at (845) 547-2241 or by email at rsmith@civil-tec.com with any questions or concerns you may have.

Sincerely,

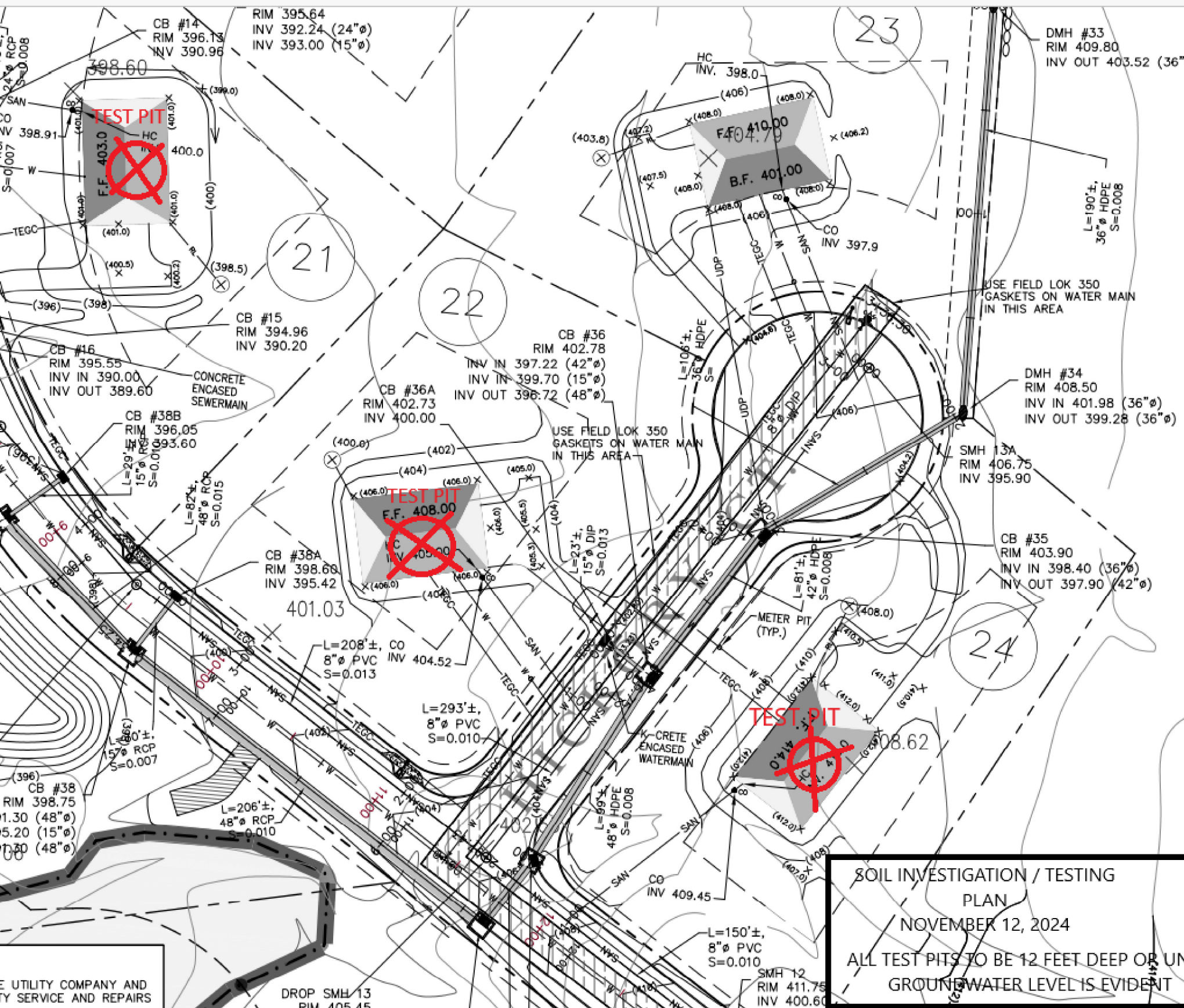
A handwritten signature in black ink, appearing to read "Rhonda Smith". The signature is fluid and cursive, with the first name "Rhonda" being more prominent than the last name "Smith".

Rhonda Smith

Civil Tec Engineering & Surveying P.C.

139 Lafayette Avenue, 2nd Floor, Suffern, NY 10901 Tel 845.547.2241 Fax 845.547.2243
111 Main Street, Chester, NY 10918 Tel 845.610.3621

Civil-Tec.com



	CATCH BASIN, CURB INLET	
	DRAINAGE MANHOLE	
	SANITARY MANHOLE	
	UTILITY POLE	
	WATER VALVE	
	WATER METER PIT	
	HYDRANT	
	DRAINAGE LINE	
	SANITARY LINE	
	SANITARY HOUSE CONNECTION	
	WATER LINE	
	GAS LINE	
	ELECTRIC LINE	
	TELEPHONE, ELECTRIC, GAS & CABLE LINE	
	COMMUNITY UNDER DRAIN OUTLET	
	PRIVATE UNDER DRAIN OUTLET	
	ROOF LEADER	
	RRV LOCATION	
	WETLANDS MARKER	
	FIRST FLOOR ELEVATION	
	BASEMENT FLOOR ELEVATION	
	OVERBANK STABILIZATION RIP-RAP	
	HEADWALL & POND OVERFLOW WEIR RIP-RAP	
	HEADWALL	
	CLEANOUT	
	PEDESTRIAN ISLAND	
	LIGHT POLE	
	PROPOSED CHANNEL IMPROVEMENT AREA (SEE NOTE 12.)	

SOIL INVESTIGATION / TESTING
PLAN
NOVEMBER 12, 2024
ALL TEST PITS TO BE 12 FEET DEEP OR UNTIL
GROUNDWATER LEVEL IS EVIDENT

LEONARD JACKSON ASSOCIATES

CONSULTING ENGINEERS
26 FIREMENS MEMORIAL DRIVE, POMONA, NEW YORK 10970
phone: (845) 354-4382 fax: (845) 354-4401

LJA

WEINBERGER SUBDIVISION
VILLAGE OF MONTEBELLO
ROCKLAND COUNTY, NEW YORK

GRADING, DRAINAGE & UTILITY PLAN (SECTION A)